



WELCOME MEETING

20th June 2024





I am proud to say that Wimboldsley is one of the family of schools that are part of Concordia Multi Academy Trust. As Chief Executive Officer I am excited that you have chosen us at the start of your child's educational journey. Our Trust prides itself on providing the highest levels of education to each and every child within our schools and we are confident that your child will thrive within Wimboldsley Community Primary School.

This is an exciting time for you and your family and we understand there may also be mixed emotions - joy, anticipation, and perhaps a touch of nervousness. Within our Trust, we strive to make the introduction to school as smooth and positive as possible for all of our new starters.

We are a vibrant and inclusive Trust, with a strong focus on nurturing young minds and fostering a love of learning. Our schools, including Wimboldsley, provide a stimulating and supportive environment where every child can flourish.

I look forward to meeting your little one and hopefully getting to know you over the coming years.

Tracy Webb | CEO



OUR LEADERSHIP TEAM



Mrs S Jones

Headteacher
Currently on maternity leave



Mrs V Hughes

Acting Headteacher



Mrs C Hazeldine

Lead Teacher

Wimboldsley CP School | SLT



TEAM EYFS

Mrs V Whiston



Class Teacher & SENCo

Mrs S Wakefield



Teaching Assistant

Mrs L Bancroft



Teaching Assistant

Miss E McFerran



Higher Level Teaching Assistant



Wimboldsley CP School | EYFS

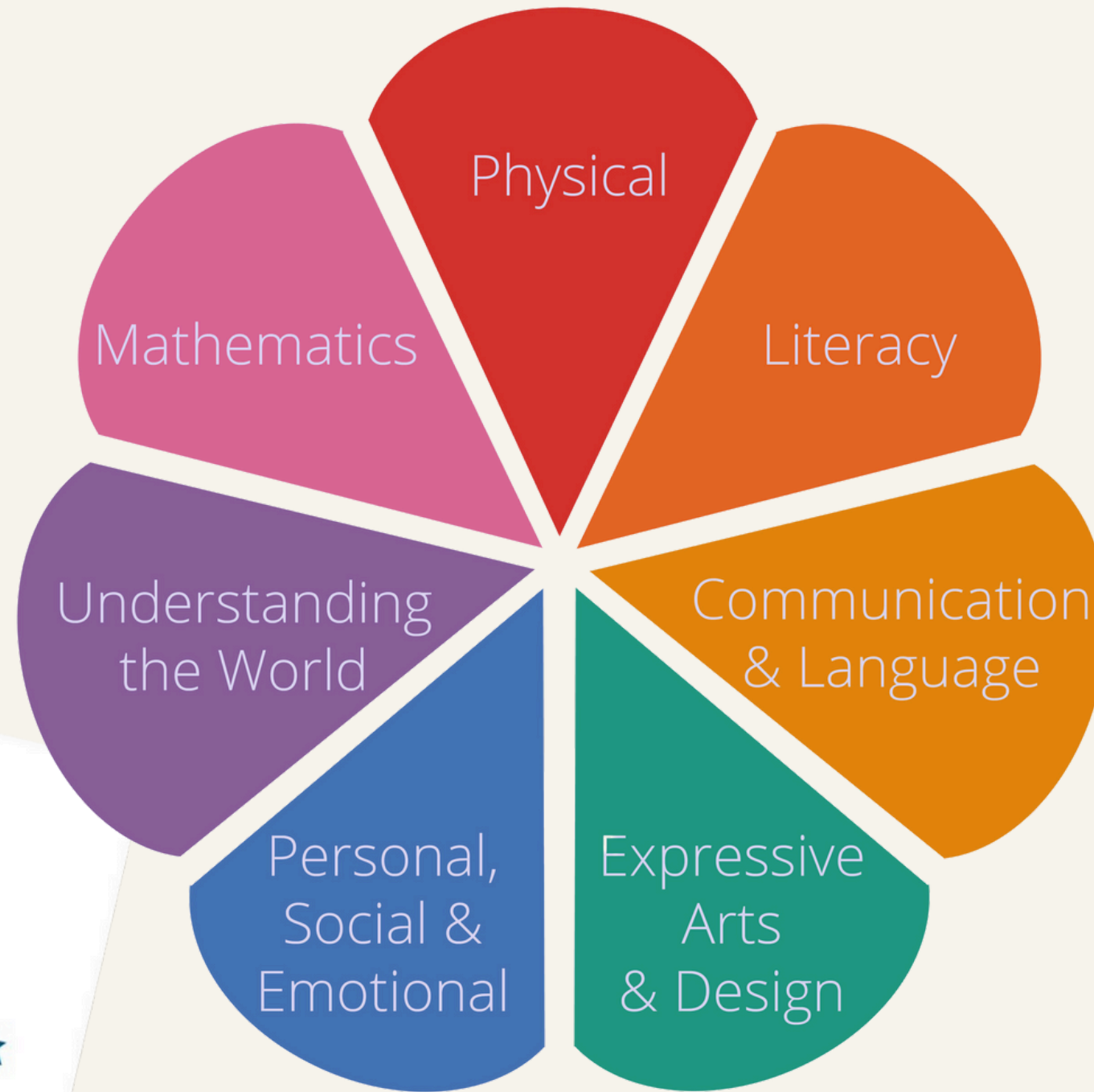


ACORN CLASS RECEPTION & YEAR ONE

12 Reception children & 15 Year 1 children



OUR CURRICULUM



We're teaching every child to read with Little Wandle Letters and Sounds Revised

A complete SSP validated by the Department for Education



Pathways to Write



Wimboldsley CP School | EYFS



SNACKS & LUNCH

As of September 2014 all children from Reception class to Year 2 are entitled to free school meals.
We encourage all the Reception children to have a school dinner.

Example Menu:

WEEK ONE				
Beef/Veggie Burger in a Bun with Potato Wedges and Baked Beans or Seasonal Vegetables	Spaghetti Bolognese/ Vegetarian Bolognese with Garlic Bread and Seasonal Vegetables	Roast of the Day/Quorn Fillet with Roast/Mashed Potatoes, Seasonal Vegetables and Gravy	Chicken/Vegetarian Curry with Rice, Naan Bread with Seasonal Vegetables	MSC Fish, Chips and Garden Peas/Mushy Peas or Baked Beans
Filled Jacket Potato with a Selection of Fillings Served with Salad	Filled Jacket Potato with a Selection of Fillings Served with Salad	Filled Jacket Potato with a Selection of Fillings Served with Salad	Filled Jacket Potato with a Selection of Fillings Served with Salad	Filled Jacket Potato with a Selection of Fillings Served with Salad
Fruit Crumble and Custard	Chocolate Crispy Cake and a Fruit Wedge	Iced Sponge Cake	Fruit Platter	Golden Crunch and Fruit Wedge



Mrs N Evanson

Nicky 'Cooker'

Toast is offered as a mid morning snack,
currently charged at subsidised rate of
£5 for half term. Children are also offered a piece of fruit and milk (until they turn 5) daily.



PUPIL PREMIUM

WHAT IS PUPIL PREMIUM?

Pupil premium is additional funding provided to schools to support pupils, to ensure they benefit from the same opportunities as their peers.

DO YOU RECEIVE ANY OF THE FOLLOWING:

- Universal Credit with no earned income or with net monthly earnings less than £616.67
- Income Support
- Income based Jobseeker's Allowance
- Income related Employment Support Allowance
- Support under Part VI of the Immigration and Asylum Act 1999
- The guaranteed element of State Pension Credit
- Child Tax Credit - as long as you have a yearly household income of less than £16,190 (as assessed by HM Revenue and Customs) and do not get Working Tax Credit
- Working Tax Credit run-on (paid for 4 weeks after you stop qualifying for Working Tax Credit)

HOW IS IT SPENT?

Pupil premium helps us to provide additional support both in and out of the classroom for your child; from trips, educational experiences, free school meals and emotional support to additional resources in the classroom.

APPLY NOW!

www.cheshirewestandchester.gov.uk/residents/education-and-learning/free-school-meals
www.cheshireeast.gov.uk/schools/school-meals/free_school_meals.aspx

Wimboldsley CP School | PP



WORKING TOGETHER

School will provide:

- Weekly School and EYFS Newsletter
- Regular communication about our learning - X
- Opportunities to talk to class teacher
- EYFS Stay and Play sessions
- Class Assemblies
- Reading Diaries
- Parent's Evenings
- Annual Reports

Communication with home:



www.wimboldsleyprimaryschool.co.uk

@WimboldsleyCPS

@acorn_class

Commitments from home:

- Positively support school.
- Ensure your child wears the correct school uniform and follows the school dress code.
- Ensure that your child attends school punctually every day during term time, unless there is a good reason for absence (e.g. illness).
- Notify the school by email or telephone in the event of absence.
- Support the school's policies and guidelines on learning, behaviour, attendance and uniform.
- Attend parent/teacher meetings to discuss your child's progress.
- Read regularly at home
- Keep the school informed of any changes in circumstances (i.e. address, phone number, emergency contacts etc.)
- Promptly inform the school of any concerns or problems that may affect your child's learning, behaviour or happiness at school.
- Support school in the teaching of safe and secure internet use at home.
- Respect all members of the school community, abiding by the policy of zero tolerance towards rude and aggressive behaviour.
- Regularly read information on the website and school communication



GETTING SCHOOL READY

The school uniform is as follows:

Blue Wimboldsley Jumper or Cardigan

Grey/Black Skirt or Trousers/Shorts

White/Blue Polo Shirt/Blouse

Blue Gingham Summer Dress

Black School Shoes (no trainers)

PE KIT - Drawer Sting PE Bag (we will let you know when this is needed)

Blue Wimboldsley T-Shirt

Black Shorts

Black Pumps/Trainers

If the weather is cold then children can bring tracksuits for PE lessons

We encourage children not to wear nail varnish or jewellery except watches and stud earrings.

Extras

Wallet School Book Bag

Water Bottle

Our school uniform is available from:

Clever Cloggs, Wheelock Street, Middlewich, CW10 9AE

Telephone: 01606 835712

My Clothing - <https://myclothing.com/wimboldsley-community-primary-school/7174.school>



Wimboldsley CP School | Uniform



SAFEGUARDING



- Punctuality
- Photograph Permission
- Drop off at the gate
- Home Time Collection

School Times:

8.30am Gates open, pupils can start arriving from this time

8.45am Register is taken and morning session begins for all children in Acorn and Hazel classes

8.50am Gates close, register is taken and morning session begins for all children in Horse Chestnut, Willow and Oak classes

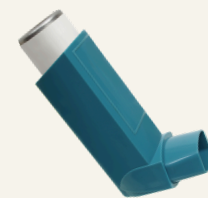
3.15pm End of the school day for Acorn and Hazel class

3.20pm End of the school day for all children in Horse Chestnut, Willow and Oak classes

First Aid

Please ensure you have accurately completed your data collection sheet .

Please keep us updated!



Food allergies and intolerances

Edsential Catering form to be completed asap



TRANSITION 2024

One size does not fit all, we will make adaptations for your individual child where needed.

20th June 2024 5pm	Welcome Meeting - Parents/Carers only in the school hall
3rd July 2024 3:40 - 4pm	EYFS Open Classroom Parents/Carers to attend with children for 'stay and play' <u>session</u> . Siblings welcome
10th July 2024 3:40 - 4pm	EYFS Open Classroom Parents/Carers to attend with children for 'stay and play' <u>session</u> . Siblings welcome
16th July 2024 11am - 11:45	EYFS Teddy Bears Picnic 2 Parents/Carers invited to attend with children. Don't forget your teddy bear! School will provide some light snacks.
17th July 2024 3:40 - 4pm	EYFS Open Classroom Parents/Carers to attend with children for 'stay and play' <u>session</u> . Siblings welcome
22nd July 2024 9:30am - 11am	EYFS Classroom Visit Unaccompanied, children to be dropped off and collected from school gates.
23rd July 2024 lunchtime	School closes for summer break - Please ensure summer learning bags have been collected from the school office.
4th September 2024 9am -12:15am	First Day at School Morning visit, unaccompanied
6th and 7th September 2024 9am - 12:15pm	Morning and Lunch at School
9th September 2024 8:4am5 - 3:15pm	Full time at school Drop off at school gates, collect <u>from classroom</u> at hometime.

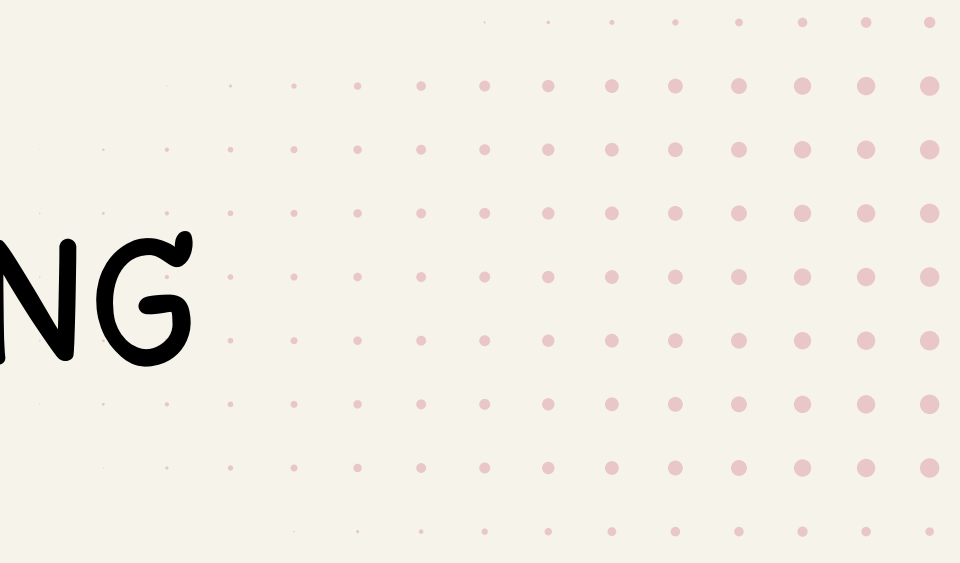




GETTING READY: SUMMER LEARNING

- Name writing
- Using a knife and fork independently
- Zipping up a coat
- Sharing a story
- Simple counting to ten
- Going to the toilet independently
- Establish a good routine
- Talking about starting school with lots of excitement

YOUR CHILD HAS A SUMMER LEARNING
BAGS TO TAKE AWAY TONIGHT.



Wimboldsley CP School | Summer Learning



THANK YOU

Thank you so much for your time this evening.

Contact details for school:

01606 832321

admin@wimboldsley.cheshire.sch.uk

transtion@wimboldsley.cheshire.sch.uk

vwhiston@wimboldsley.cheshire.sch.uk

head@wimboldsley.cheshire.sch.uk



SHALL WE CHECK THE SCORE?!

Wimboldsley CP School | Thank You

